



KATHOLIEKE UNIVERSITEIT
LEUVEN



Research in the Humanities and Social Sciences - day

Introduction

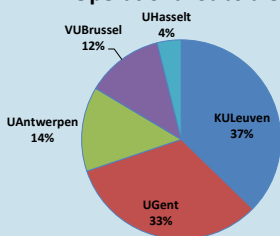
10-11-2011

P. Marynen

KULeuven: facts of life

KATHOLIEKE UNIVERSITEIT
LEUVEN

Operational Subsidies

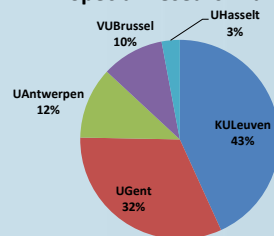


Parameters:
55% Education
45% Science (capacity)

654 Mio €/year

Policy area: Education and Training

Special Research Fund



Parameters:
'Excellence' in Science
Diploma's
PhD
Publications / Citations
Internationalisation and diversity

137 Mio €/Year

Policy area: Economy, Science and Innovation

Special Research Fund (BOF): facts of life

Gewicht parameters in de BOF-sleutel	2011	2013	2016
Input	30,00%	28,00%	25,00%
Aantal Bachelor- en initiële masterdipl.	25,00%	25,00%	23,00%
Wetenschappelijkpersoneelsbestand	1,00%		
Mobiliteits- en diversiteitscoëfficiënt (vanaf 2007)	4,00%	3,00%	2,00%
Output	70,00%	72,00%	75,00%
Doct. Dipl.	35,00%	35,00%	35,00%
Publicaties	35,00%		
- WOS		14,88%	15,36%
- VABB niet-WOS		2,62%	6,29%
Citaties		17,50%	15,36%
			16,60%

BOF + Hercules, Odysseus, TT, ...

KULeuven: facts of life

Research funding expenses 2010 **€ 347 Million**

Internal funds	26.8%
Special Research Fund (BOF)	24.7%
Industrial Research Fund (IOF)	2.1%

leverage to

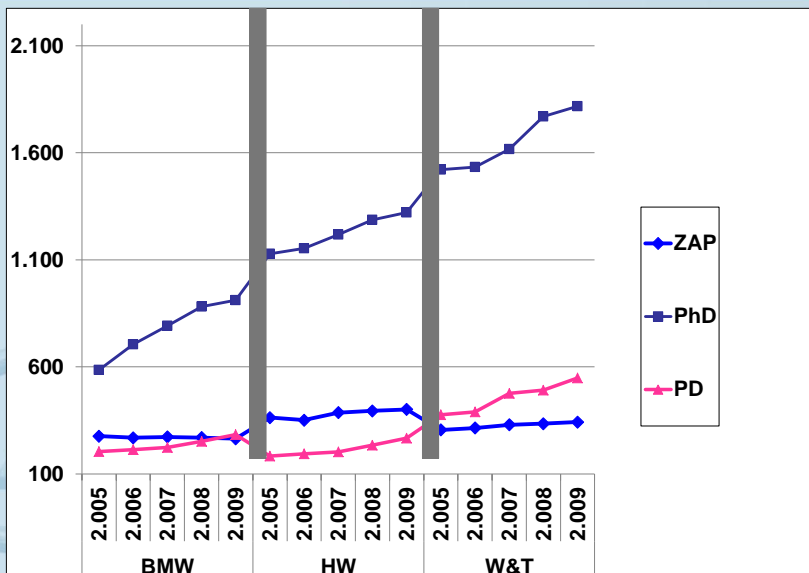
science-driven

market-driven

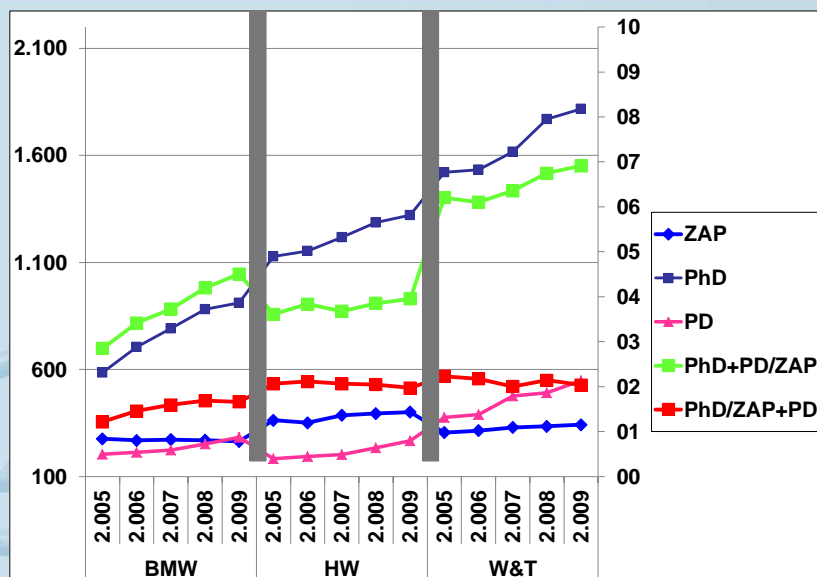
External funds	73.2%
Flemish Science Fund (FWO)	23.2%
Other government funds	13.0%
International/EU	6.8%
Flemish Science & Innovation Fund (IWT)	8.6%
Industrial /private sector contracts	22.0%

- Independent Research Council
- External peer review
- Criteria:
 - excellence
 - innovation
 - sustainability
 - past performance

Faculty @ KULeuven: a challenge



Faculty @ KULeuven: a challenge



New initiative Flemish Government

Young investigators (PhD + PDO)

VR: 4 mio € (2011) 1.5 mio €

- Career development
- Internationalisation
- Skills
- Collaboration within Flanders

- No 'research'
- 25% in collaboration with at least two other universities

- Working party of the Council for Research Policy
Ortwin de Graef

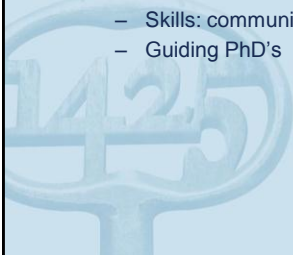
Postdoc : K.U.Leuven policy

- Postdoc as a **transition**
 - formation period - not a substitute staff system
 - 5/6 will make a career outside academia
- **Average** postdoc career: **max. 6 years**
 - exceptions: driven by positive choice and perspective
 - exceptions are in principle not supported by BOF/FWO
- Postdocs as a **key factor** for:
 - Innovation in research
 - Excellence
 - (Interdisciplinary) collaboration
 - Academic mission (training and guiding the next generation of researchers)
- Postdoc ≠ professional with a PhD

Postdoc : what ?

Transition:

- **Independent researcher (to be)** independent ≠ isolated
 - Works **in** a research group/unit, **with** a group leader/PI
 - Thinks independently – works in a research unit
 - Contributes to and is part of the research strategy of the unit
 - Contributes to academic and logistic tasks of the unit
- **Teacher**
 - Skills: communication, didactic
 - Guiding PhD's



Postdoc : **Plan** your career!

- Development of independent research profile (strengthening academic skills)
 - defining research field
 - acquiring expertise
 - international network
- Development as a teacher
 - PhD
 - Communication, didactic skills
- ✓ You will be evaluated according to the criteria of your field
 - ✓ Authorship
 - ✓ Promotership
 - ✓ Recognition for academic activities



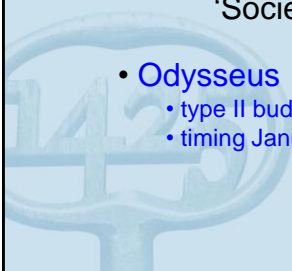
New opportunities

VR: FWO: projects/fellowships + 8 mio €
Odysseus + 3 mio €

IWT: SBO + 2.5 mio €
TBM + 1 mio €
Baekeland +2.5 Mio €

‘Societal relevance’

- **Odysseus**
 - type II budget 200 – 300 k€/jaar
 - timing January/February



EU opportunities: ERC StG

ERC Starting Grant: principles

- Scientific excellence is the sole selection criterion
- Project in all fields of research are eligible for funding
 - Groundbreaking, creative research concepts
 - Often: interdisciplinary research
- Eligible researchers: 2 – 12 years post PhD
 - Categories: Starters (2-7y) and Consolidators (7-12y)
- Significant funding is provided
 - Up to 1.5 M€ for a 5-year-project



Research @ KULeuven: lifelines

- **Research Coordination Office (DOC)**
 - Inform
 - Funding opportunities
 - Lectures and workshops
 - Stimulate
 - Special Research Fund (BOF) / Industrial Research Fund (IOF)
 - EU funding programmes
 - Government programmes and agencies (FWO, IWT, Hercules ...)
 - Support
 - PhD studies
 - Postdoctoral researchers
 - Contract management
 - Research policy
- **Leuven Research & Development (LRD)**
 - industrial partnerships: contract research, patents, spin-offs, research parks

DOC :

CONTACT US: +32-16-324065

www.kuleuven.be/research/contact/doc.html

Overview of funding opportunities

geDOCumenteerD:

www.kuleuven.be/gedoc

